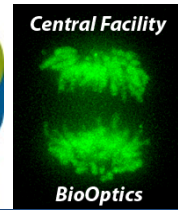


Importing VisiView ROIs in ImageJ

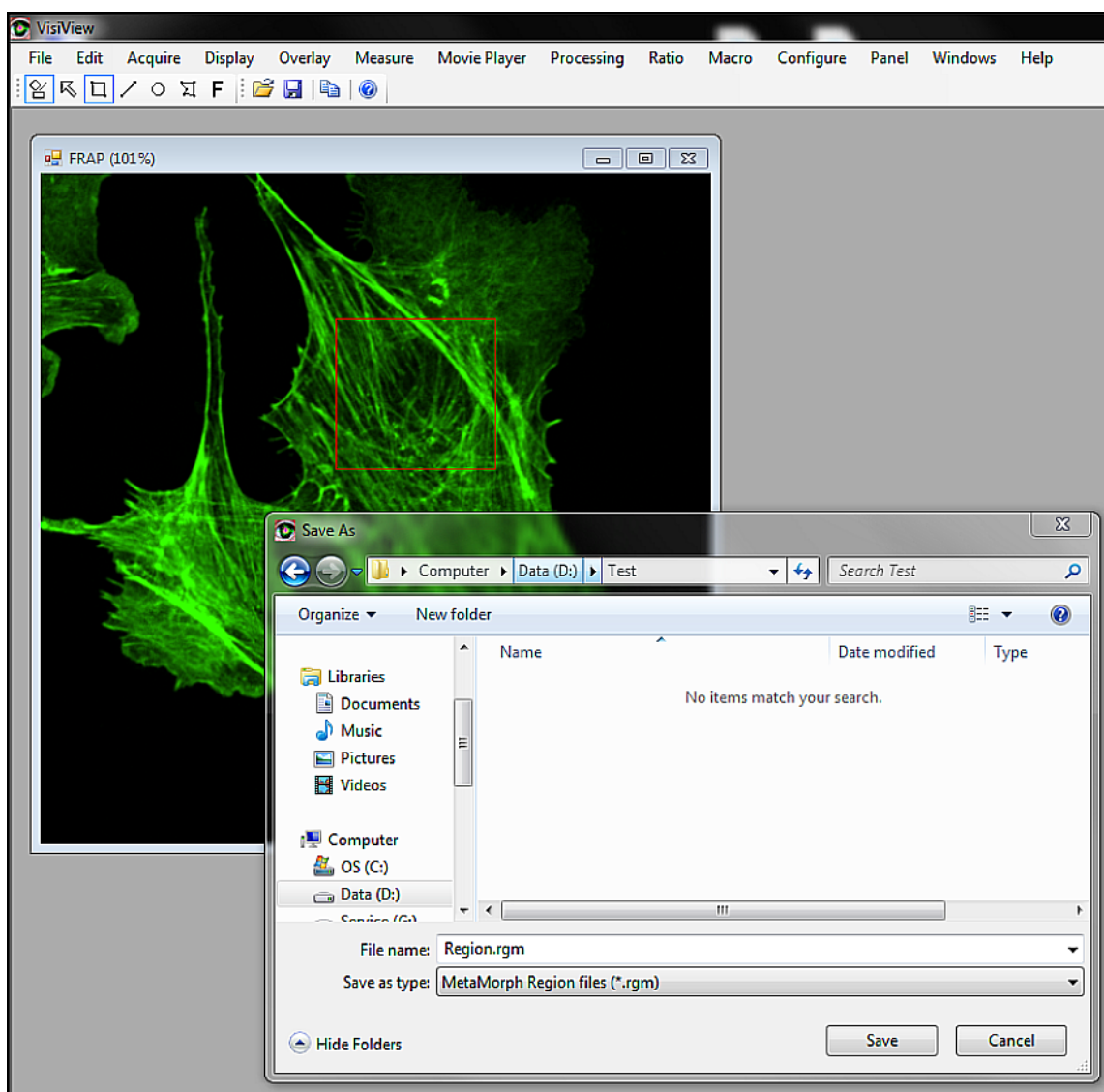


The VisiView acquisition software allows to store regions of interest (ROIs; e.g., the area bleached in a FRAP experiment) as separate files. This document illustrates how to import these regions in ImageJ.

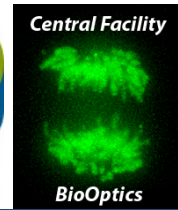
Note: the procedure outlined requires VisiView version 2.1.4 or higher (currently installed only on the new LIVE Spinning Disk/Nanodissection unit of the facility). It works only with rectangular regions and lines, not with circular or elliptical regions.

Export of regions from VisiView

In the menu bar, click "Edit" > "Region Save". In the file chooser dialog popping up, select a directory and file name. Under the "Save as type" option, choose "MetaMorph Region files (*.rgm)", not the VisiView default format "Region files (.rgn)".



Importing VisiView ROIs in ImageJ



Import in ImageJ

Download the plugin "Metamorph nd & ROI files importer" (mm_nd_and_roi_pack.jar) from

http://imagejdocu.tudor.lu/doku.php?id=plugin:inputoutput:nd_stacks_builder:start

Copy it into the plugins folder of ImageJ and restart the program (or use the "Help/Update Menus" function to refresh the ImageJ's menus). In the menu "File" > "Import", a new command ("Metamorph ROI") will be available. Upon import of an .rgm file, the regions contained in the file are added to the ImageJ's ROI Manager. Clicking on a region in the ROI manager activates it in the current image window.

