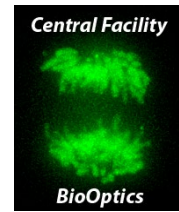


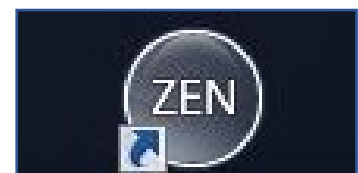
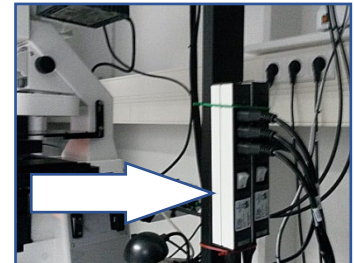
# Zeiss LSM 700

## Start-up/ Shut-down Guide



### Startup

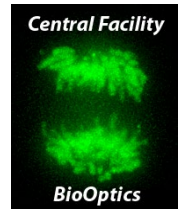
- Switch on the two power strips on the right side of the overhead shelf
- The laser key on the system remains in the on position (horizontal position) at all times.
- Turn on the computer, login into account 'LSM User' (the password is announced during trainings)
- Click the 'ZEN' icon on the desktop
- Click 'Start System' in the ZEN logon screen appearing



# Zeiss LSM 700

## Start-up/ Shut-down Guide

---



### **Shut Down**

- Close ZEN.
- Shut down the computer.
- Turn off the two power strips of the system.